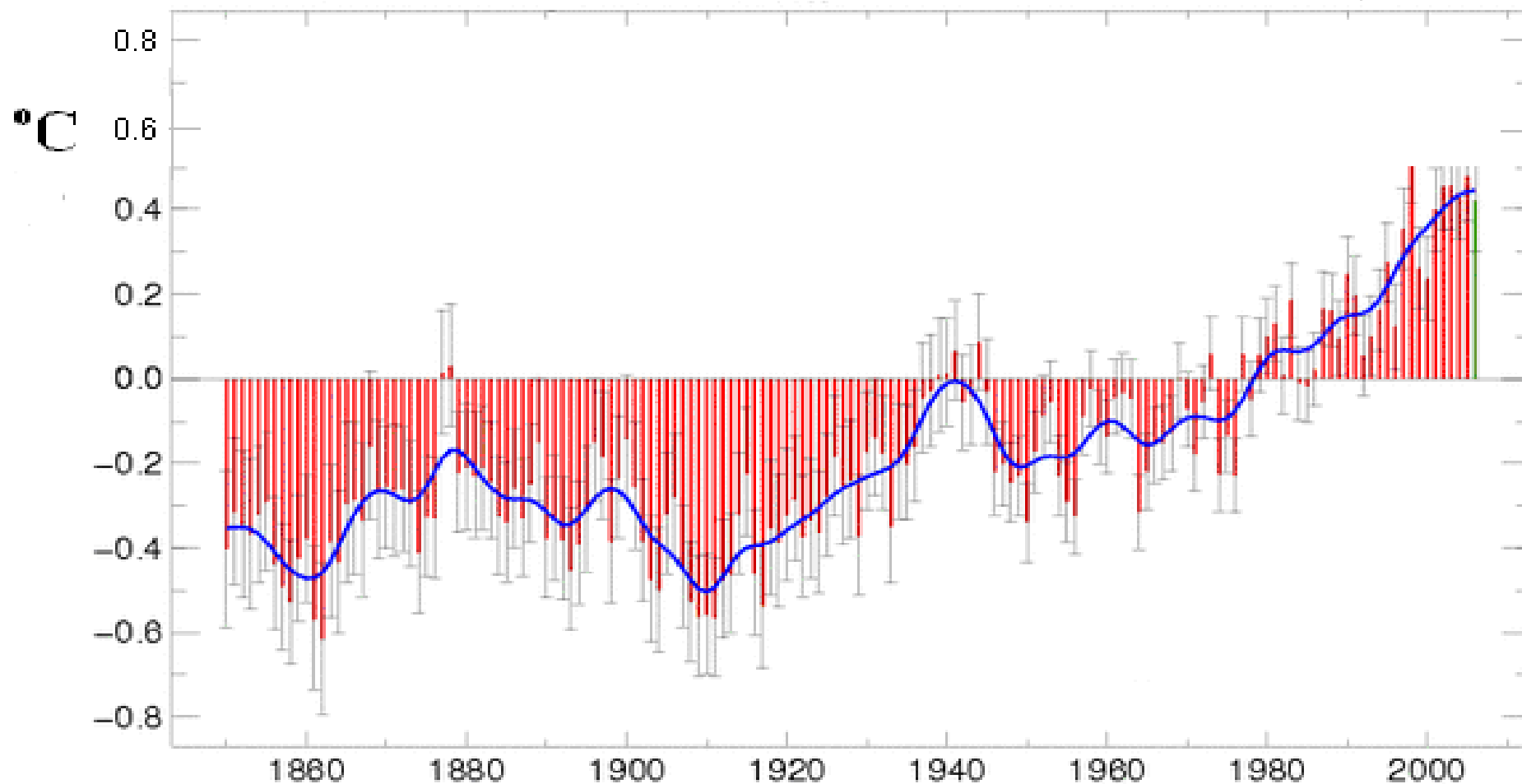
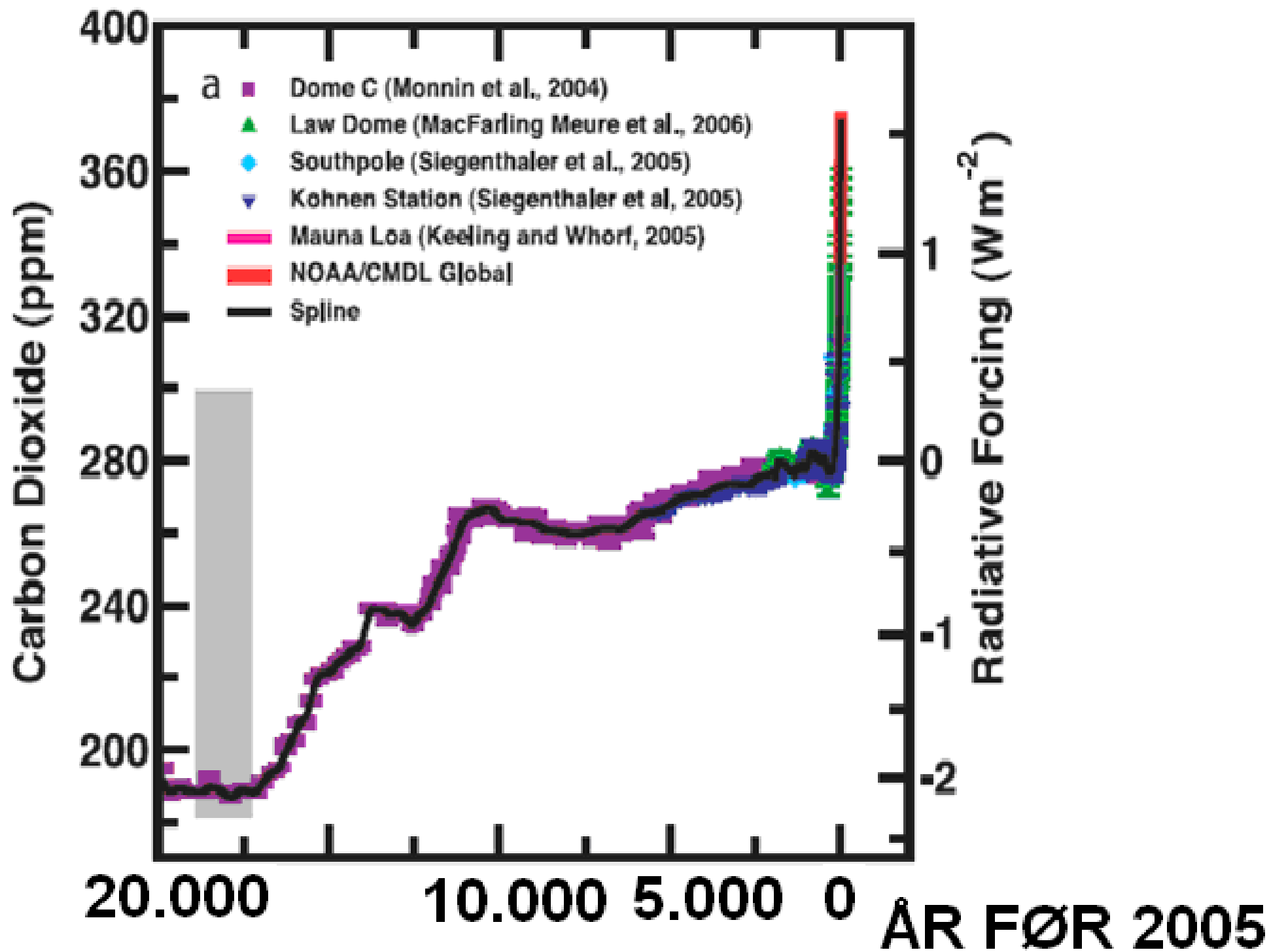


GLOBAL GJENNOMSNTTSTEMPERATUR 1850-2006



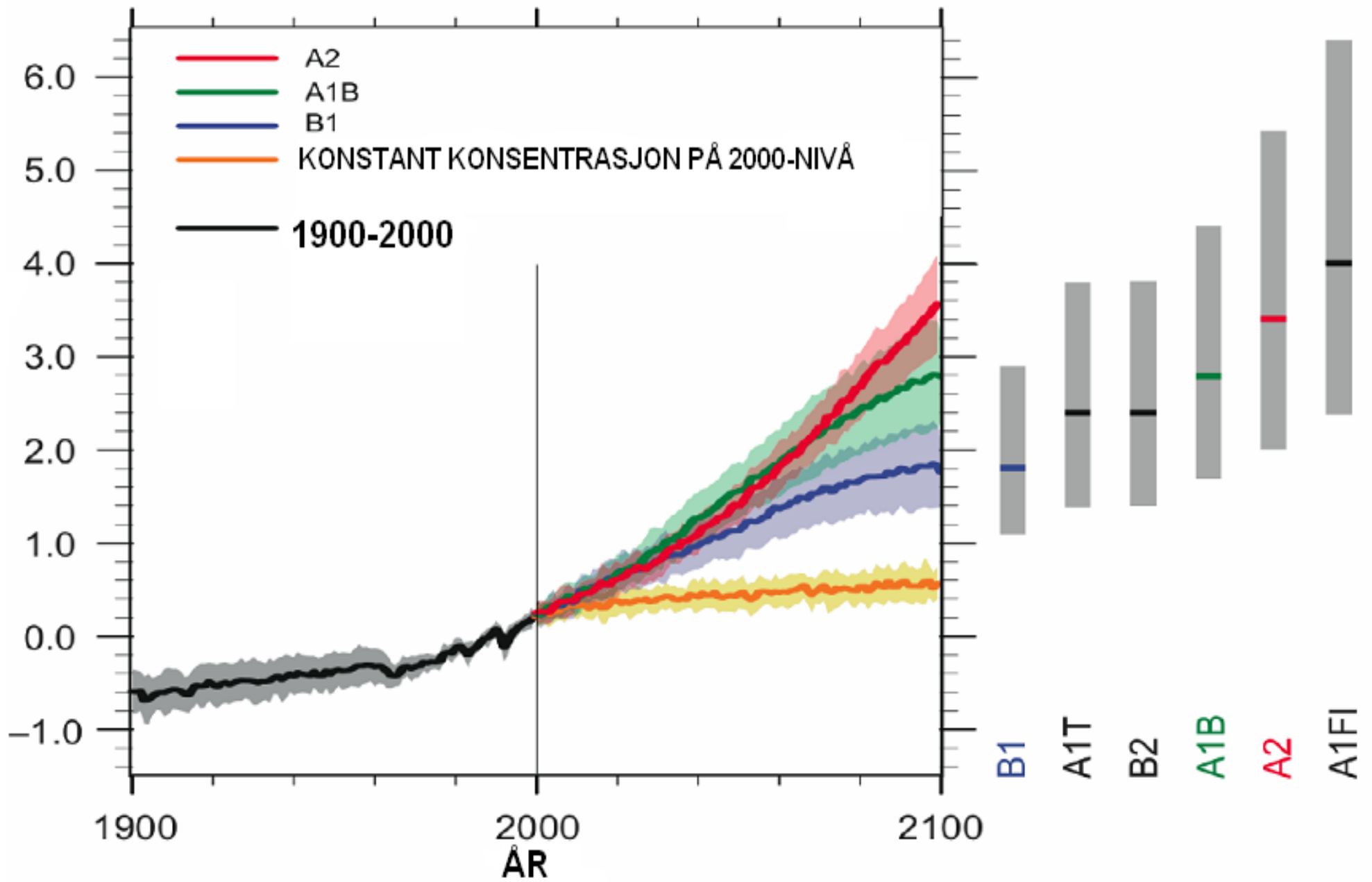
Hadley Centre for Climate Change and CRU, University of East Anglia

TEMPERATURFORSKJELLER I FORHOLD TIL 1961-1990



FORSKJELLEGE FRAMTIDSUTVIKLINGAR FOR TEMPERATURAUKE

GLOBAL GJENNOMSNITTSTEMPERATUR I GRADER C



Gjennomsnittleg

global

temperaturløke

1990 - 2095

mellom

1,1 og 6,4

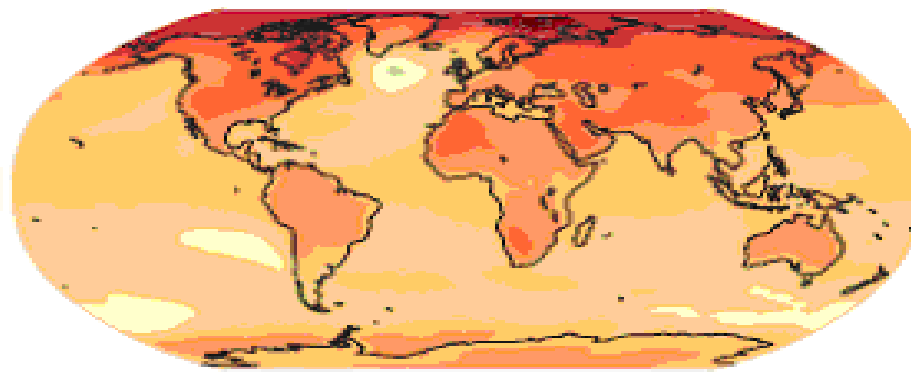
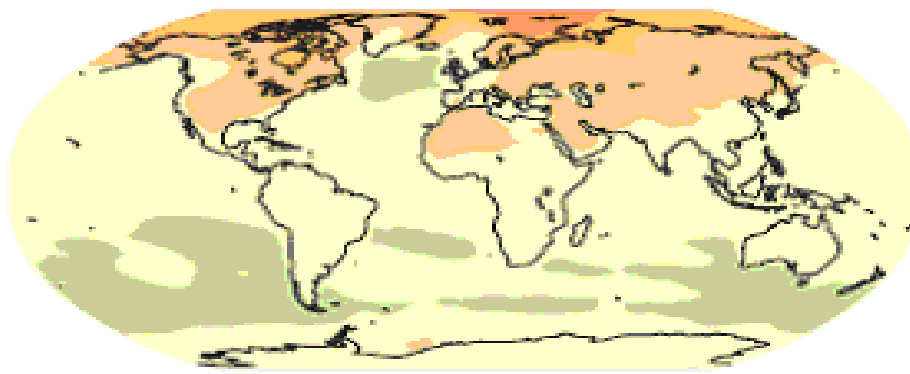
grader Celsius

TEMERATURUTVIKLINGAR I FORHOLD TIL 1980-1999

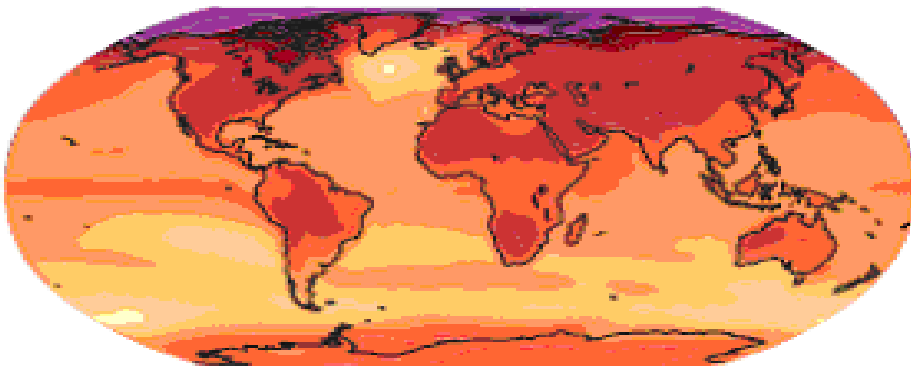
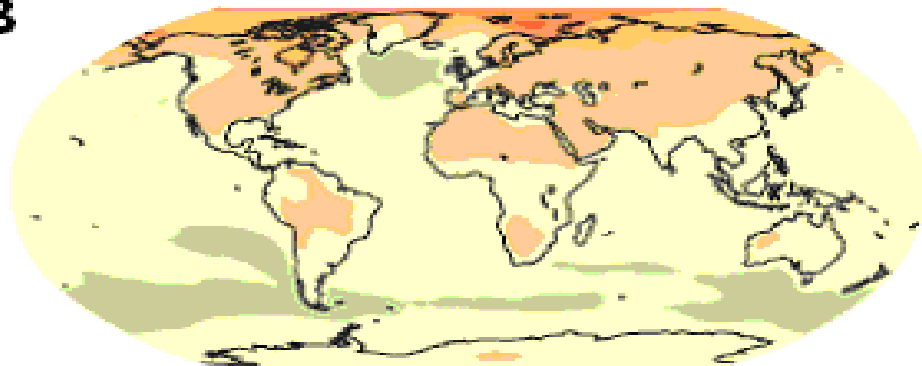
2020-2029

2090-2099

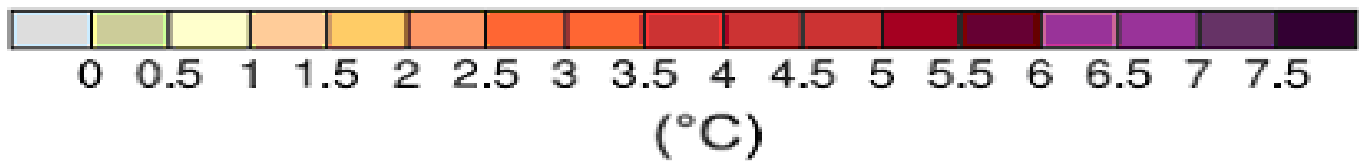
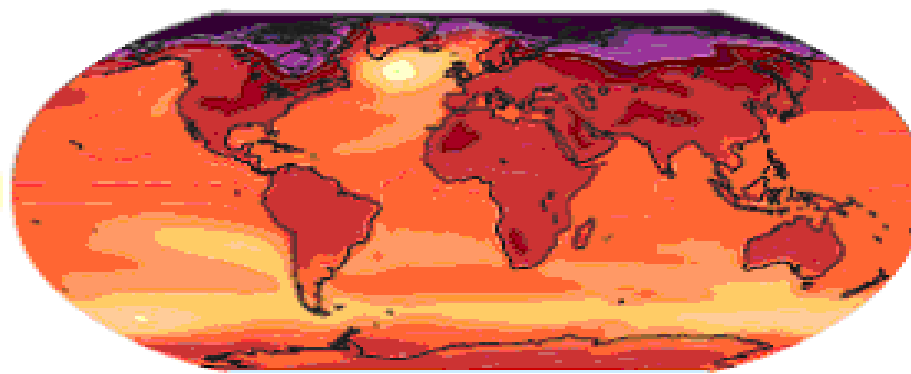
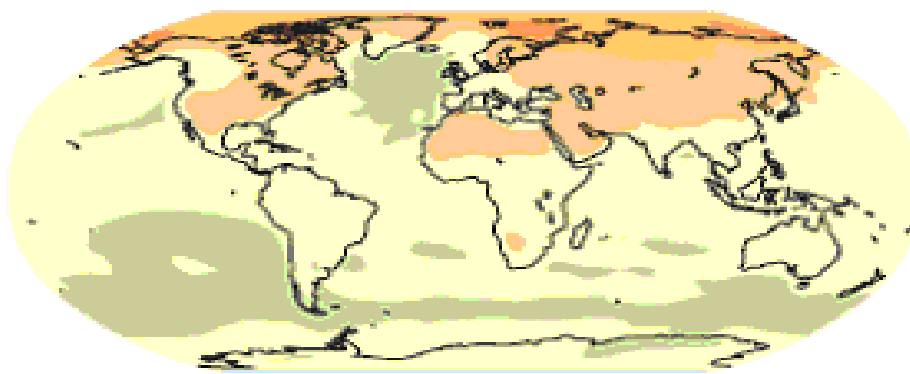
B1



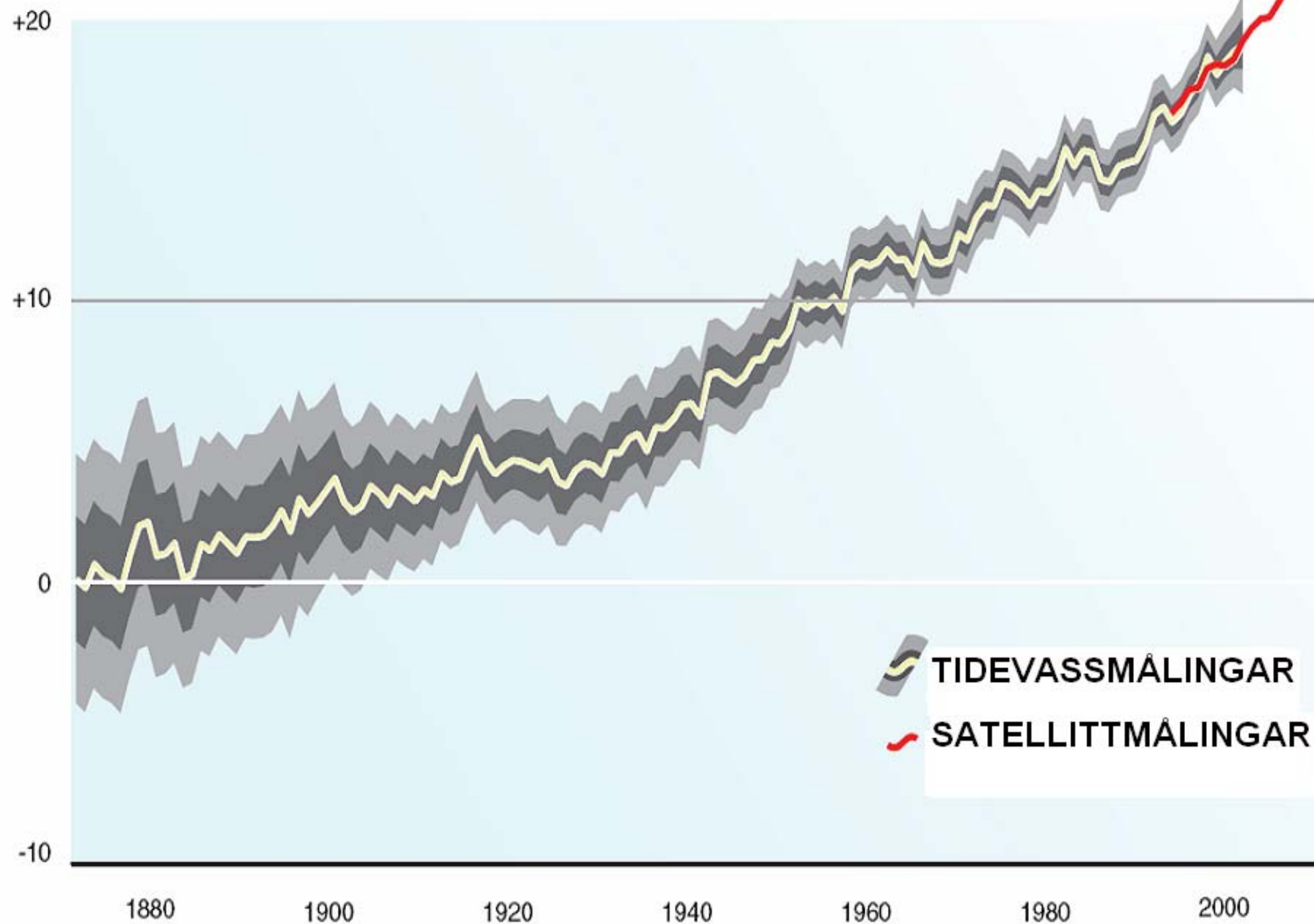
A1B



A2



GLOBAL HAVNIVÅAUKE I cm



BIDRAG TIL HAVNIVÅAUKE 1993-2003

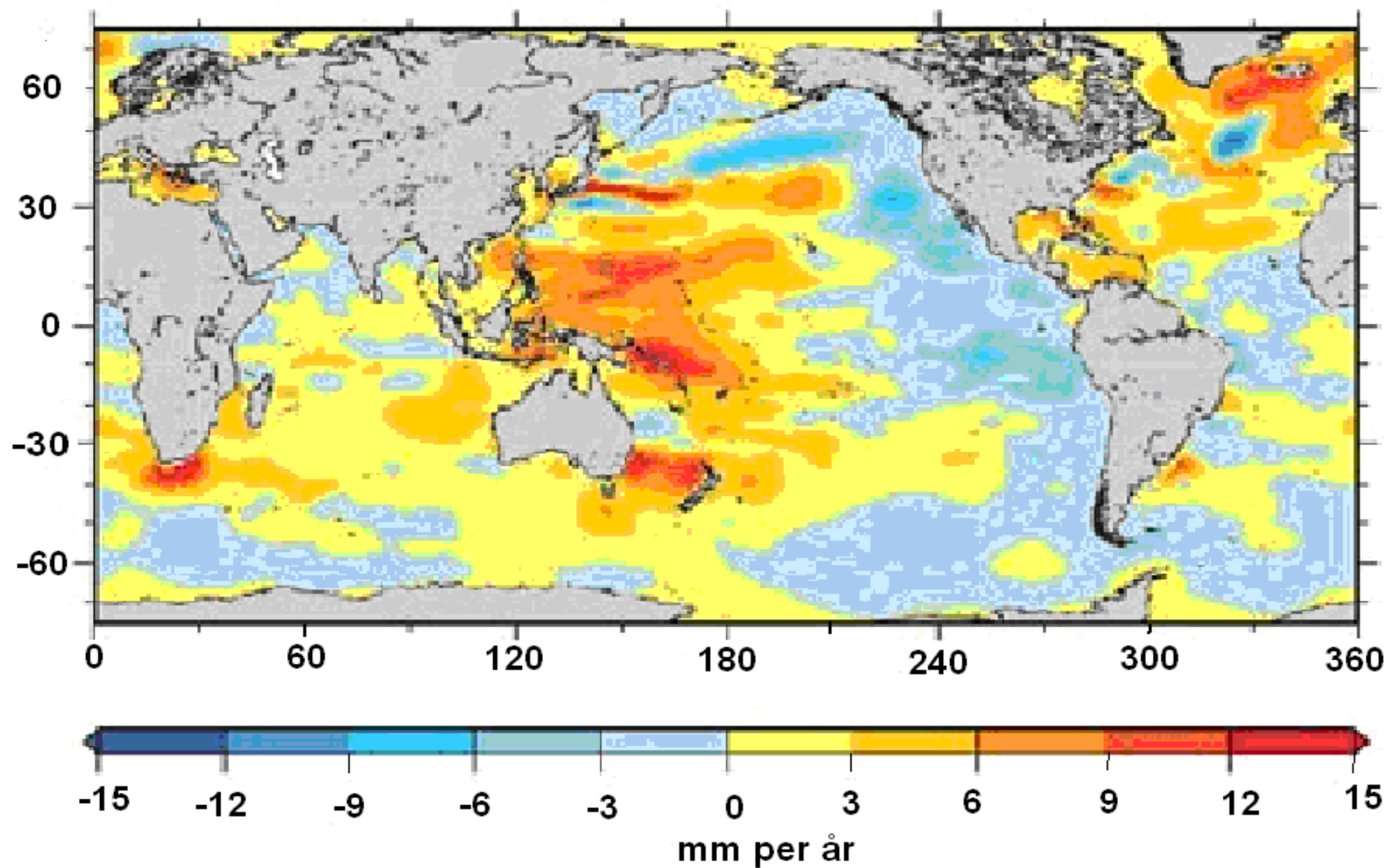
TERMISK UTVIDING CA. 57 %

SMELTING AV ISBREAR CA. 27 %

ISSMELTING PÅ GRØNLAND CA. 8 %

ISSMELTING PÅ ANTARKTIS CA. 8 %

ENDRINGAR I HAVNIVÅ 1993-2003



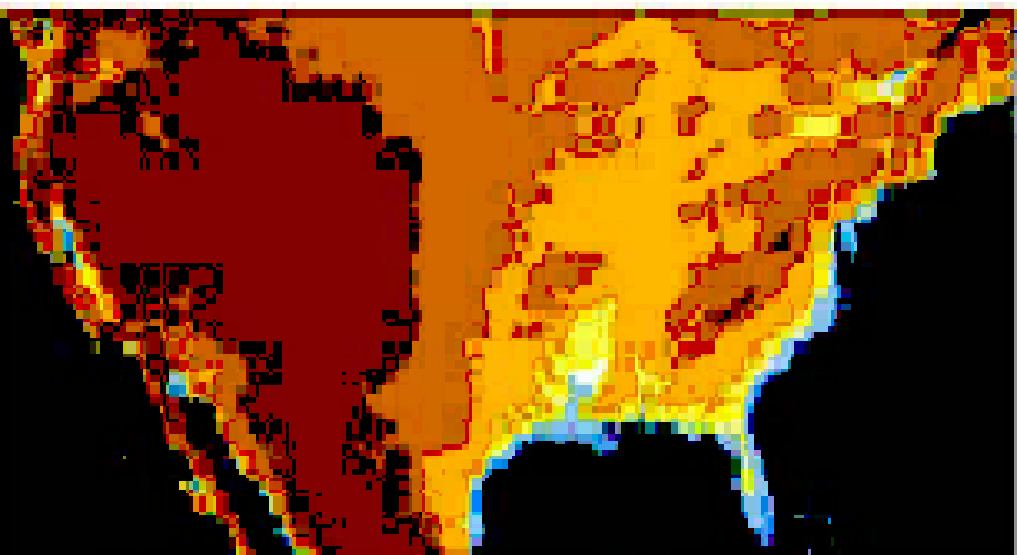
Havniivåauke

1990 - 2095

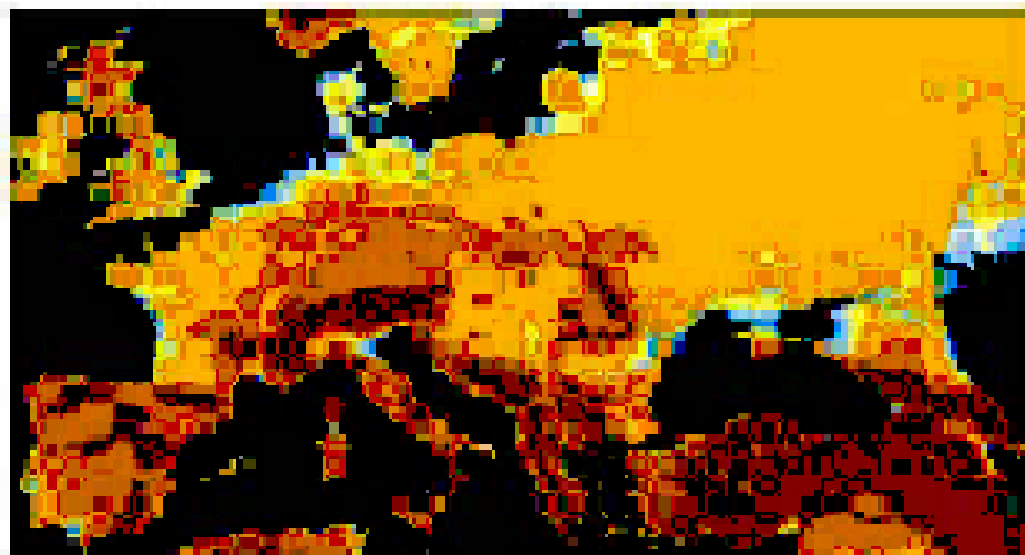
19 - 58 cm



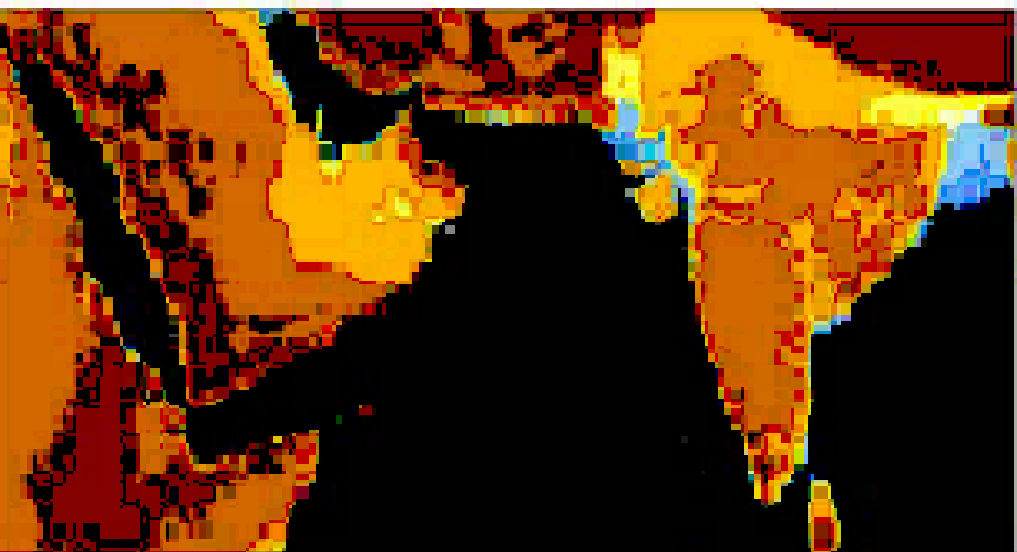
USA



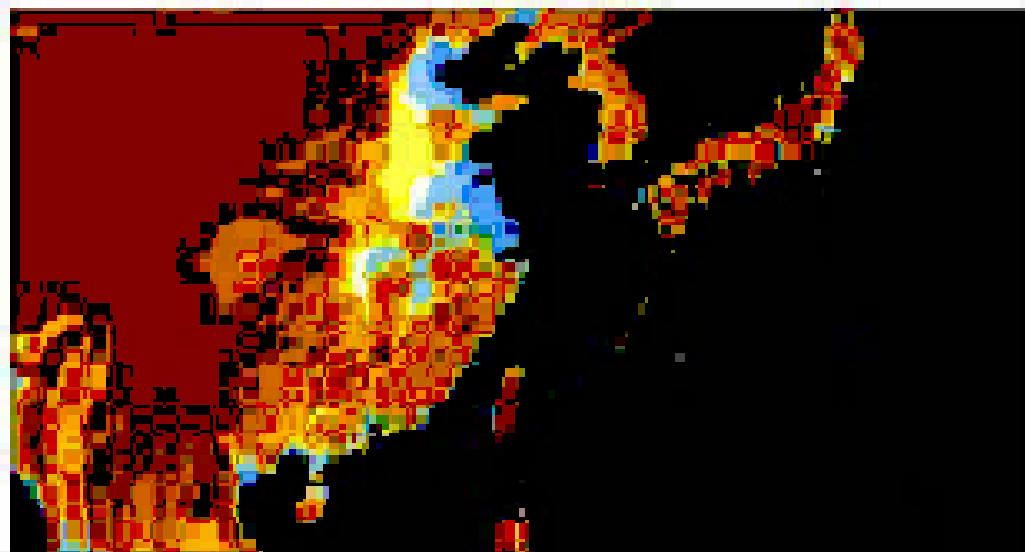
EUROPA



SØR-ASIA



KINA



HAVET HAR BLITT SURARE

DETTE ER SKADELEG FOR

ALLE ARTAR MED KALKSKAL

FARLEGE KLIMAENDRINGAR

NÅR GLOBAL

MIDDELTEMPERATUR KJEM

2 GRADER CELSIUS OVER

TEMPERATUREN FØR 1750

MEIR ENN 50 PROSENT

SJANSE

REDUKSJON 2000-2050 PÅ

80 PROSENT

Total Solar Irradiance

